

Mason Road, Headless Cross, Redditch B97 5DG

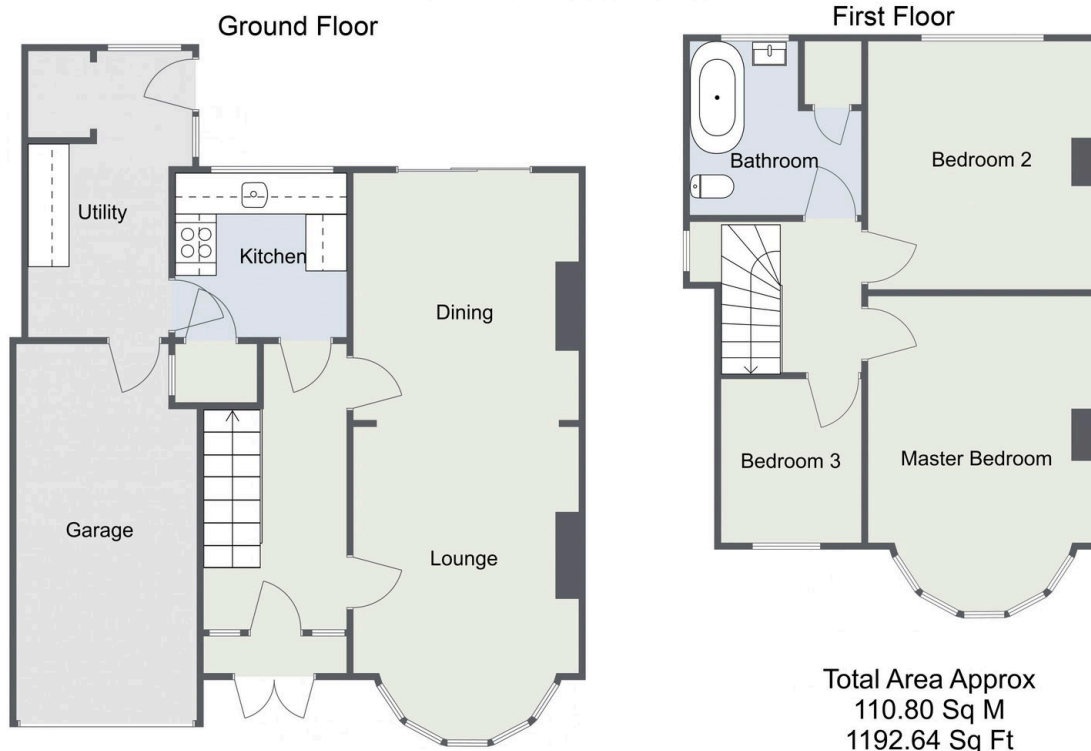
Offers In Region Of £280,000

3 1 1



- Traditional Semi Detached House
- Open Plan Lounge and Dining Room
- Generous Garden
- Garage
- Three Bedrooms
- Kitchen and Separate Utility
- Off Road Parking
- No Upward Chain

Mason Road, Redditch



For illustrative purposes only. Decorative finishes, fixtures & fittings do not represent the current state of the property. Measurements are approximate & not to scale. Floor Plans made using RoomSketcher.

A traditional and well-presented three bedroom semi-detached property, available with no upward chain, situated in Headless Cross. The property offers well-proportioned accommodation, a generous rear garden, off road parking and a garage.