

## Dixon Close, Enfield, Redditch B97 6AD

Offers Over £315,000

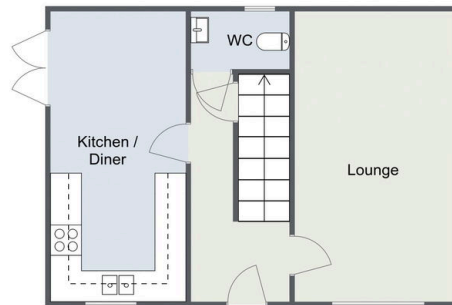
3 2 1



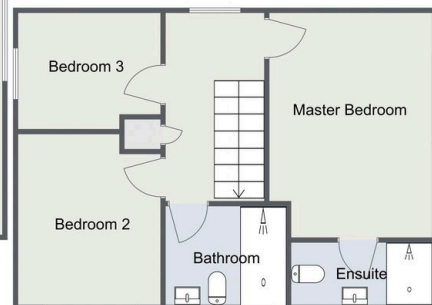
- Modern Detached Property
- Spacious Dual Aspect Lounge
- Principal Shower-Room, En-Suite to Master and Guest WC
- Ample Off Road Parking
- Three Well-Proportioned Bedrooms
- Stylish Kitchen/ Diner
- Low Maintenance Rear Garden
- Detached Garage

Dixon Close, Redditch

Ground Floor



First Floor



Total Area Approx  
90.3 Sq M  
971.98 Sq Ft

For illustrative purposes only. Decorative finishes, fixtures & fittings do not represent the current state of the property. Measurements are approximate & not to scale. Floor Plans made using RoomSketcher.

A modern and beautifully presented three-bedroom detached house, ideally located in Enfield. This property features stylish, well-proportioned accommodation, a low-maintenance garden, ample off-road parking, and a detached garage.