



Sanders Close, Batchley, Redditch B97 6SB

£269,950

The logo for Arden Estate Agents, featuring a stylized green house icon above the word 'arden' in a bold, white, sans-serif font. Below 'arden' is the text 'ESTATE AGENTS' in a smaller, white, sans-serif font.

arden  
ESTATE AGENTS

It's who  
you move  
with.

## Sanders Close, Batchley, Redditch B97 6SB

This modern and beautifully presented three-bedroom link-detached home in Batchley boasts well-proportioned accommodation with stylish interiors. The property features an attractive low-maintenance landscaped rear garden, complete with a detached garden room—perfect for a home office or leisure space, and off-road parking.





**Kitchen/Diner**  
3.5m x 4.96m (11'5" x 16'3") max

**Lounge**  
5.39m x 2.18m (17'8" x 7'1")

**WC**  
0.86m x 1.67m (2'9" x 5'5")





## Porch

2.03m x 0.8m (6'7" x 2'7")

## Master Bedroom

3.46m x 4.12m (11'4" x 13'6")

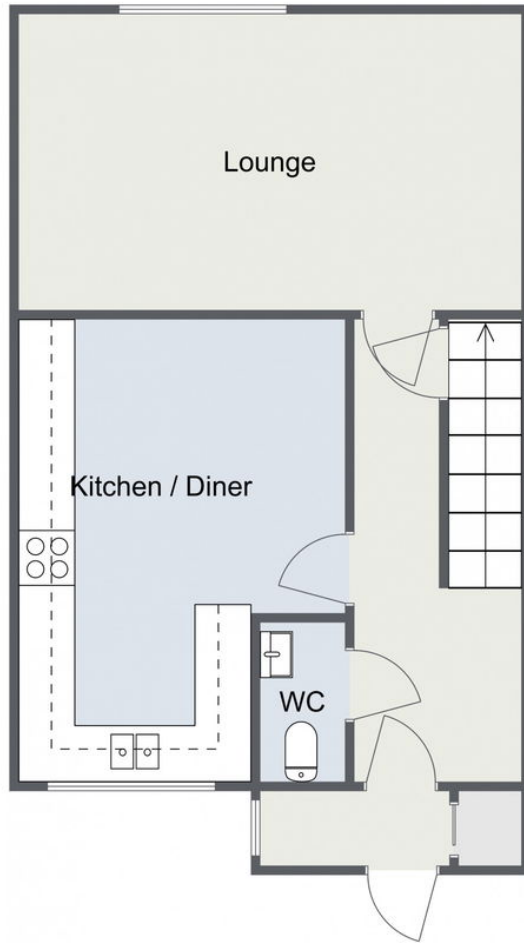
## Bedroom 2

3.46m x 4.16m (11'4" x 13'7")

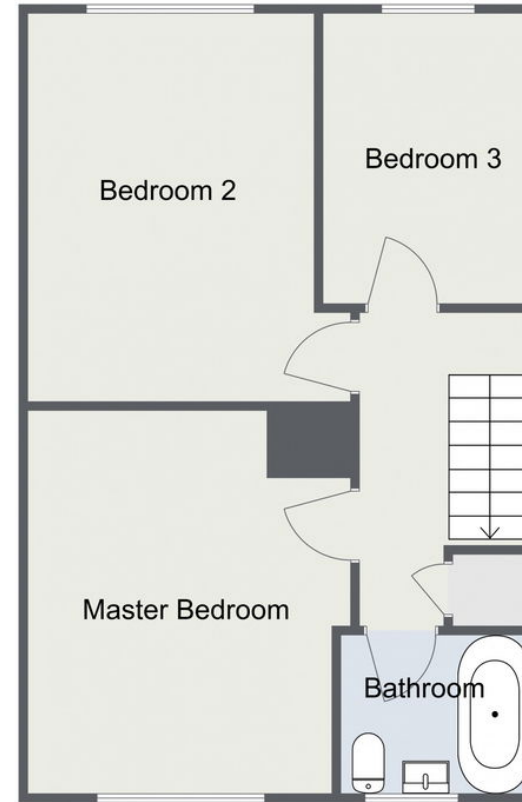


# Sanders Close, Redditch

## Ground Floor



## First Floor



Total Area Approx  
92.1 Sq M  
991.35 Sq Ft

For illustrative purposes only. Decorative finishes, fixtures & fittings do not represent the current state of the property. Measurements are approximate & not to scale. Floor Plans made using RoomSketcher.

For more information on this house or to arrange a viewing please call the office on:

**01527 540 654**

Alternatively, you can scan the QR to view all of the details of this property online.



**arden**  
ESTATE AGENTS