





Cotswold Close, Rednal, Birmingham, B45 0BD

£150,000

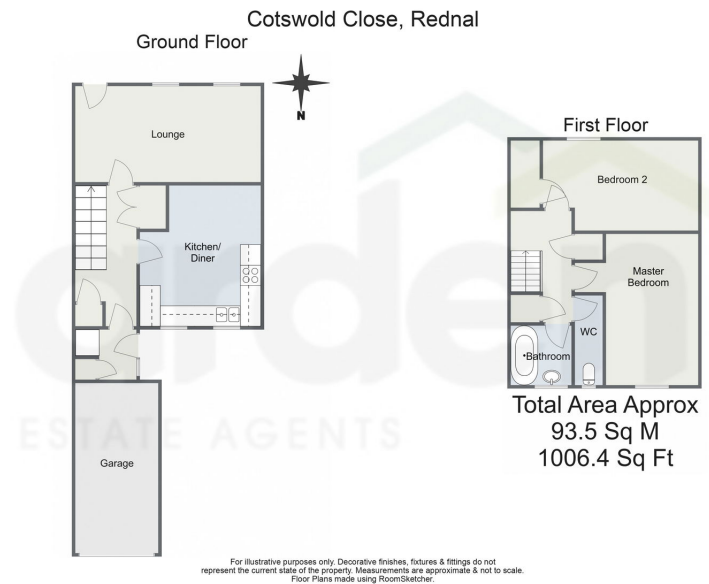
🛏️ 2 🚿 1 🚻 1





- No Upward Chain
- Two Bedroom
- Lounge
- Kitchen / Diner
- Family Bathroom
- Downstairs WC
- Off Road Parking
- Garage
- Close To Amenities
- Good Transport Links





An ideal opportunity to purchase a two bedroom end-terraced house in need of modernisation, offering a lounge, kitchen/ diner, rear garden and off road parking with a garage, situated in Rednal , Birmingham.

For more information on this house or to arrange a viewing please call the office on:

**0121 453 4349**

Alternatively, you can scan the QR to view all of the details of this property online.

