



Maisemore Close, Church Hill North, Redditch B98 9LN

Offers In Region Of £350,000



It's who  
you move  
with.

## Maisemore Close, Church Hill North, Redditch B98 9LN

This well-positioned four-bedroom detached home, available with no upward chain, is located in the popular Church Hill North area. Offering generously sized accommodation, the property includes an enclosed rear garden, driveway parking, and a garage.





**Kitchen/Diner**  
4.5m x 5.12m (14'9" x 16'9")

**Utility Room**  
2.33m x 2.14m (7'7" x 7'0")

**Lounge**  
3.5m x 6m (11'5" x 19'8") max



## Garage

2.34m x 5.51m (7'8" x 18'0")

## Master Bedroom

2.46m x 3.91m (8'0" x 12'9")

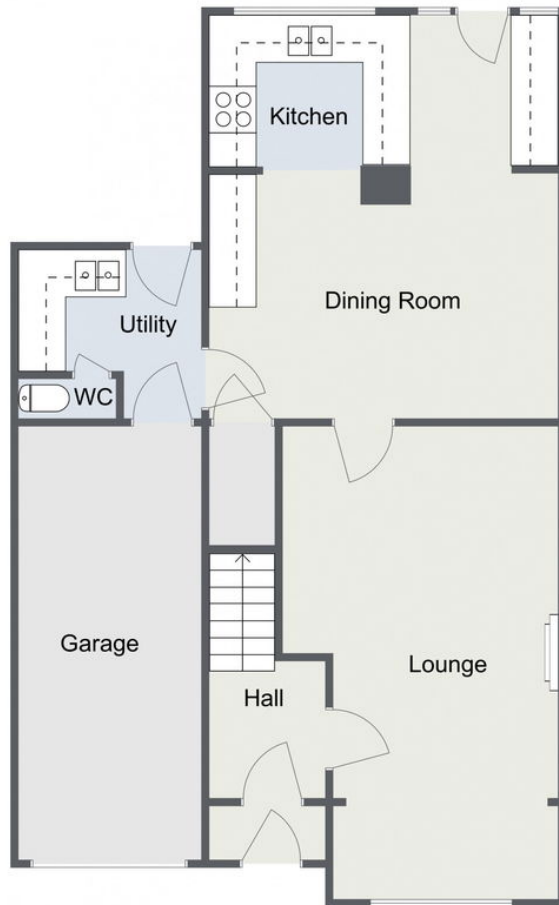
## Bedroom 2

2.46m x 3.18m (8'0" x 10'5")



# Maisemore Close, Redditch

## Ground Floor



## First Floor



Total Area Approx  
119.9 Sq M  
1,290.60 Sq Ft

For illustrative purposes only. Decorative finishes, fixtures & fittings do not represent the current state of the property. Measurements are approximate & not to scale. Floor Plans made using RoomSketcher.

For more information on this house or to arrange a viewing please call the office on:

**01527 540 654**

Alternatively, you can scan the QR to view all of the details of this property online.

