



The logo for Arden Estate Agents, featuring a green house icon above the word 'arden' in a bold, white, sans-serif font. Below 'arden' is the text 'ESTATE AGENTS' in a smaller, white, sans-serif font.

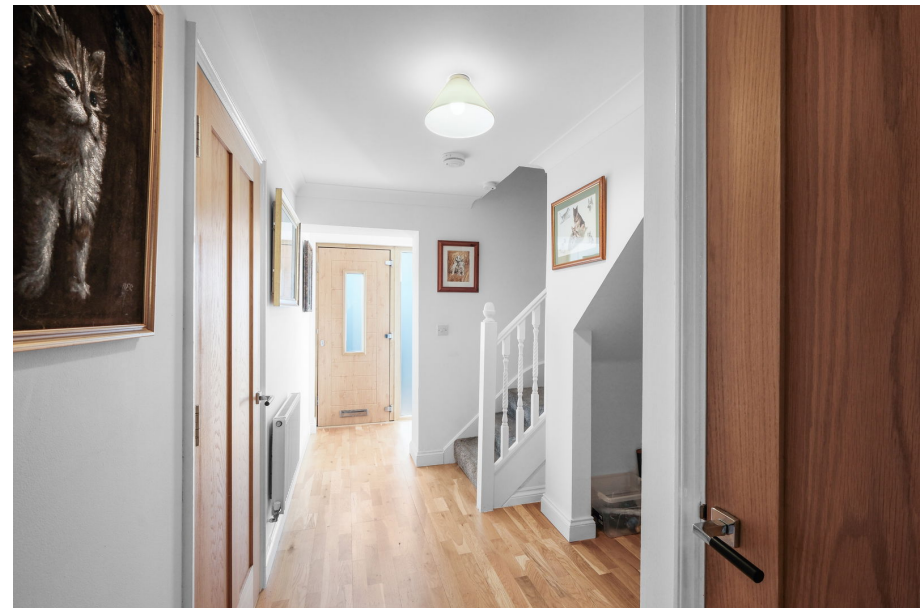
arden
ESTATE AGENTS

It's who
you move
with.

Hillery Road, Worcester, WR5 1RF

Offers Over £400,000

3 2 0



Welcome to this spacious and versatile home on Hillery Road, Worcester. This property offers thoughtfully designed living space, spread over two floors. With a total of three/four bedrooms, this home is ideal for growing families or anyone seeking flexible space to suit their lifestyle needs.

On the ground floor, you are welcomed into a large lounge, perfect for relaxing or entertaining guests. The heart of the home is the open-plan kitchen/diner, equipped with modern appliances and ample counter space, making it a great spot for family meals and gatherings. Additionally, there is a separate reception room that can be utilized as a fourth bedroom, office, or playroom, providing flexibility to accommodate your preferences. A convenient WC is also located on this floor, ensuring practicality and ease of access.

Upstairs, the first floor hosts the main sleeping quarters, including a generously sized master bedroom filled with natural light. The other two bedrooms on this floor offer comfortable spaces for family members or guests. The family bathroom, with a freestanding bath, large separate shower and modern fixtures, completes the upper level, providing a relaxing environment for your daily routines.

Positioned in a desirable area, this home combines functional space with a flexible layout, making it a perfect choice for those seeking comfort and adaptability in a residential setting. Don't miss the chance to make this property your own!

Rooms:

Reception / Bedroom 4 - 5.38m x 3.64m (17'7" x 11'11") max

WC - 1.45m x 1.09m (4'9" x 3'6")

Lounge - 4.22m x 3.79m (13'10" x 12'5") max

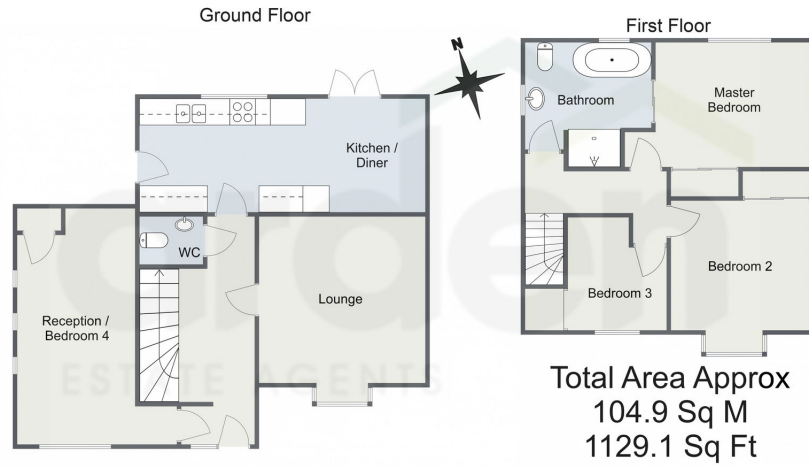
Kitchen/Diner - 6.52m x 2.59m (21'4" x 8'5")

Stairs To First Floor Landing

Master Bedroom - 4.24m x 2.84m (13'10" x 9'3") max

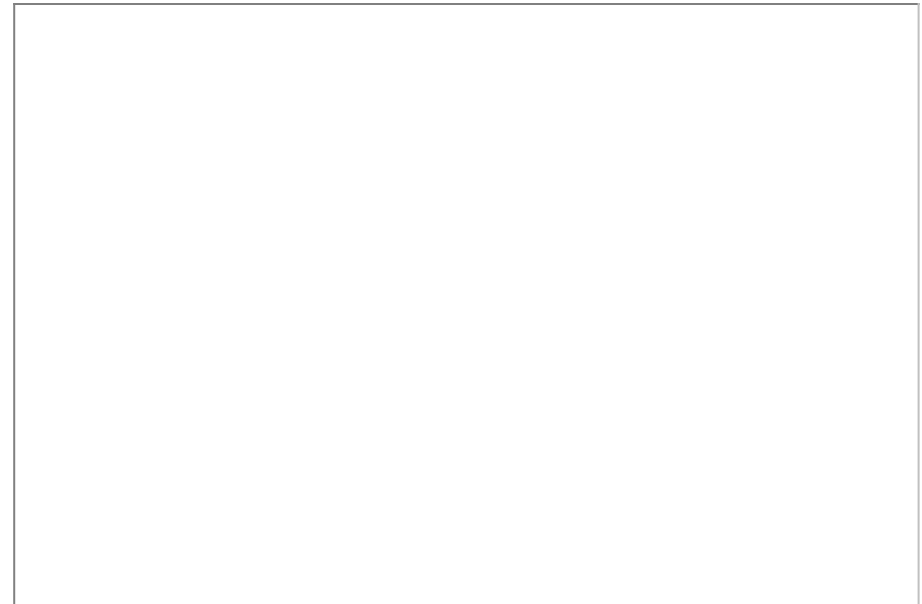


Hillery Road, Worcester



For illustrative purposes only. Decorative finishes, fixtures & fittings do not represent the current state of the property. Measurements are approximate & not to scale. Floor Plans made using RoomSketcher.

- Family Home
- Popular WR5 Location
- Renovated Bathroom
- Open Plan Kitchen
- Private Garden
- Modern Kitchen



For more information on this house or to arrange a viewing please call the office on:

01905 958 290

Alternatively, you can scan the QR to view all of the details of this property online.



arden
ESTATE AGENTS