



Rowley Hill Street, Worcester, WR2 5LN

£395,000

3 3 2



Welcome to this charming 1920s semi-detached home, nestled on the desirable Rowley Hill Street in Worcester. This beautifully presented property effortlessly blends its period charm with modern conveniences, making it an ideal choice for families and professionals alike. The home offers practical living spaces designed for today's lifestyle, set in a period exterior.

Upon entering, you'll be greeted by the hallway with access to all of the ground floor. The inviting lounge, perfect for relaxation and family time. The kitchen/diner is bright and contemporary, opening onto the garden, creating an ideal space for both everyday dining and entertaining guests. Adjacent to the dining room is a quiet office, providing a dedicated space for working from home or study. A conveniently located WC and internal access to the garage complete the ground floor, offering both practicality and ease of living.

Upstairs, the property boasts three generously sized bedrooms, all of which are doubles. The master bedroom comes complete with a private en-suite, offering added privacy and convenience. Two additional bedrooms provide versatile living options, perfect for children, guests, or additional home office space. The family bathroom on the first floor combines both classic and modern touches, creating a relaxing environment.

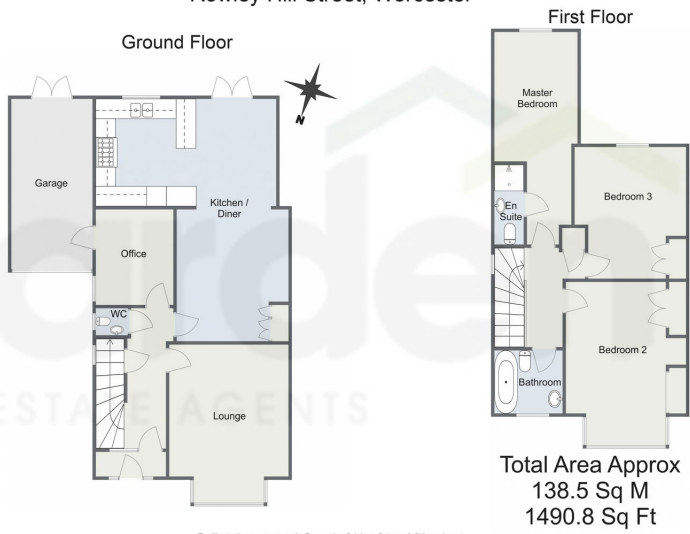
The home also benefits from a private garage and a driveway, offering ample off-street parking and additional storage solutions. The rear garden offers a patio area and is laid to lawn, perfect for outdoor relaxation or entertaining during the warmer months.

Set in a sought-after location in Worcester, this home offers easy access to local amenities, schools, parks, and transport links, making it a perfect choice for those seeking both tranquillity and connectivity. This period property offers character, functionality, and room to grow. Don't miss out on the opportunity to make this delightful 1928 semi-detached property your new family home. Contact us today to arrange a viewing!

Location: 5 Rowley Hill Street in Worcester is located in the St John's area, known for its residential character and proximity to key local amenities. The neighbourhood offers easy access to several

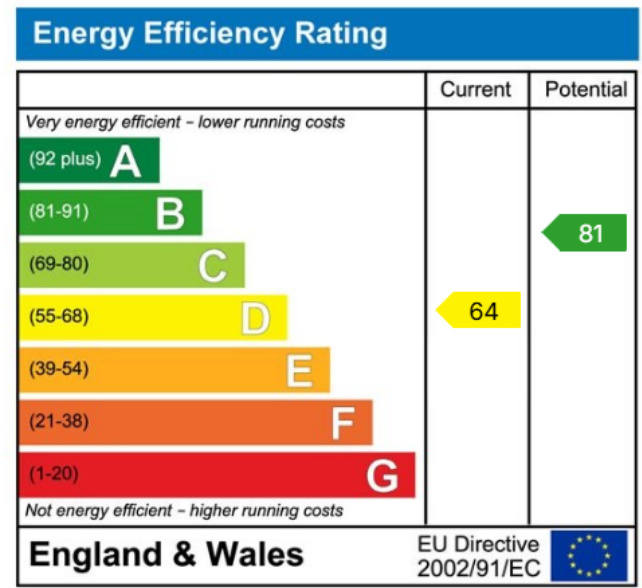


Rowley Hill Street, Worcester



For illustrative purposes only. Decorative finishes, fixtures & fittings do not represent the current state of the property. Measurements are approximate & not to scale. Floor Plans made using RoomSketcher.

- Three Double Bedrooms
- Office
- Period Features
- Off-Road Parking & Garage
- Open Plan Kitchen Diner
- Popular Location



For more information on this house or to arrange a viewing please call the office on:
01905 958 290

Alternatively, you can scan the QR to view all of the details of this property online.

