



Beltex Drive, Worcester, WR5 2FE

Offers Over £290,000

3 2 1



A stunning and modern three bedroom home located on Beltex Drive, Worcester. This nearly new property, with only one previous owner, offers a blend of contemporary design and functionality, ideal for those seeking a low-maintenance lifestyle in a tranquil, residential setting. Featuring an open plan layout and three bedrooms, we highly recommend a viewing.

As you enter the ground floor, you'll find a bright and airy open-plan lounge diner, that leads to the kitchen. The lounge diner provides great space for relaxing and entertaining. Dual patio doors lead to the garden, flooding the area with natural light and creating a warm, welcoming ambiance. The modern kitchen is fitted with gorgeous shaker style units and contrasting worktops, and the built in appliances include a gas hob, extractor fan, electric oven, fridge freezer and dishwasher. A convenient WC is also located off the main living area for guests and completes downstairs.

Upstairs, the master bedroom is complete with an en-suite bathroom and fitted wardrobes. Two additional bedrooms provide flexibility for guests, children, or even a home office. A contemporary family bathroom, shared by the second and third bedrooms, offers a comfortable and stylish space. Both bathrooms have been adorned in matching grey marble tile for a cohesive look.

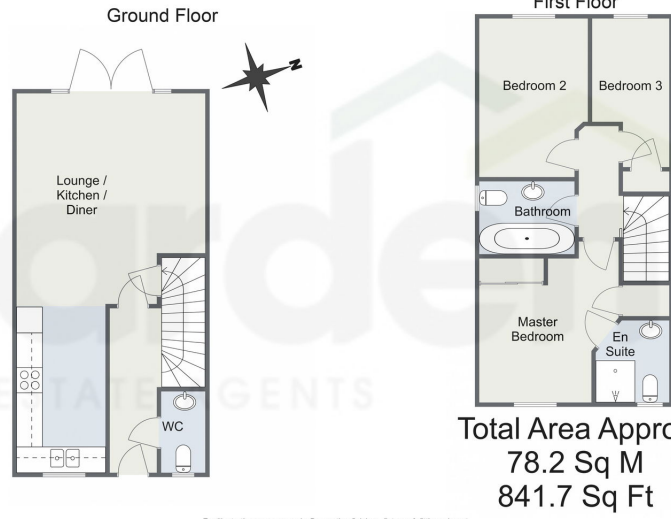
Outside, there is parking to side of the property for two vehicles on the driveway and rear access to the garden. The garden features a gorgeous patio, added by the current owners, perfect for al-fresco dining. The rest of the garden is laid to lawn and there is also a shed for added storage.

With only one previous owner, it has been well maintained and is ready for immediate move-in. This property is perfect for first-time buyers, young families, or anyone seeking a contemporary home in a prime location. Don't miss your chance to make this beautiful, nearly-new property your own. Contact us today to arrange a viewing!

Location: Beltex Drive is ideally located near several amenities. The popular Worcester Woods Country Park, with its scenic walking trails, picnic areas, and playground, is just a 5-minute drive away, perfect for family outings. Nearby residents have access to major

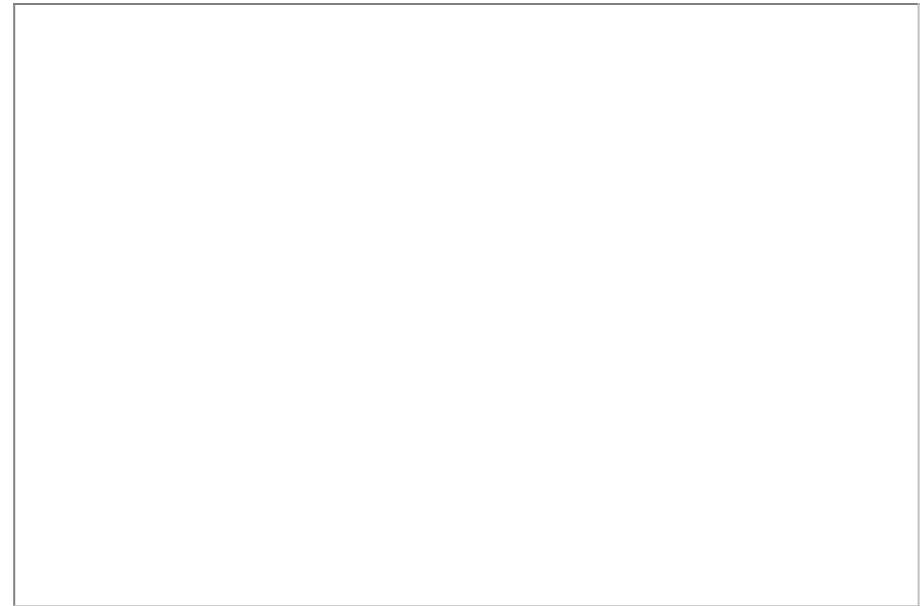


Beltex Drive, Worcester



For illustrative purposes only. Decorative finishes, fixtures & fittings do not represent the current state of the property. Measurements are approximate & not to scale. Floor Plans made using RoomSketcher.

- Open Plan Living
- Well Maintained
- En-Suite To Master
- Nearly New
- Popular Location
- Off-Road Parking



For more information on this house or to arrange a viewing please call the office on:

01905 958 290

Alternatively, you can scan the QR to view all of the details of this property online.



arden
ESTATE AGENTS