



Hawthorn Road, Worcester, WR4 9QZ

Offers Over £315,000

3 2 0



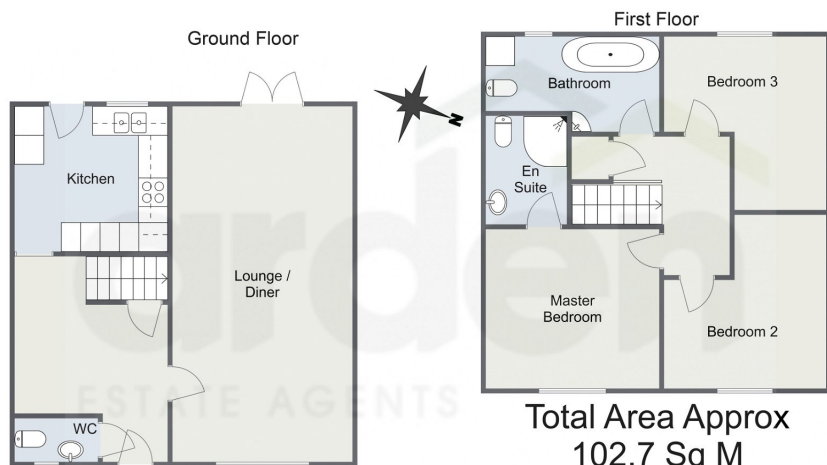
Summary: Nestled on Hawthorne Road, this beautifully appointed three-bedroom property exudes family charm. Meticulously maintained by its current owners, every corner reflects thoughtful care and attention to detail. The residence offers a perfect haven for families, boasting not only a great living space but also stunning views that greet you from the garden, making it a truly idyllic home.

Description: Stepping through the entrance, you're greeted by a spacious hallway, providing the first glimpse of the property's generous dimensions. This hallway is notably larger than those found in most homes, setting the tone for the ample space that lies ahead. Continuity in design is evident, reflecting a cohesive and tasteful décor theme that endures from the first step. Positioned conveniently to the left, a downstairs toilet adds practicality to the layout. To the right, the expansive lounge diner awaits, stretching across the width of the property. Versatility reigns here; whether it's hosting gatherings, spending time with family, or creating a productive home office corner, this area adapts effortlessly. French doors seamlessly connect this space to the rear garden, inviting indoor-outdoor living during those warmer days. At the rear, the kitchen awaits, upgraded with additional cabinets providing ample storage solutions. Equipped with modern amenities including a built-in oven, hob, extractor, and enhanced mixer tap, culinary endeavours are made a breeze. Convenient garden access enhances the kitchen's functionality and charm.

Ascending to the first floor, a spacious landing guides you to three bedrooms and a family bathroom. The master bedroom boasts a private ensuite, lavishly tiled and featuring a shower, sink, and w/c. Reflecting the attention to detail throughout this home, the family bathroom has been renovated in keeping with the ensuite and downstairs w/c. it offers both style and functionality, boasting space for a tumble dryer and plumbing for a washing machine, negating the need for a utility. The bathroom also benefits from a w/c, sink and bath. All three bedrooms exude comfort and serenity, with the master and second bedroom enjoying front aspect views while the third bedroom overlooks the tranquil rear. Each bedroom accommodates double beds, ensuring ample space for rest and relaxation.

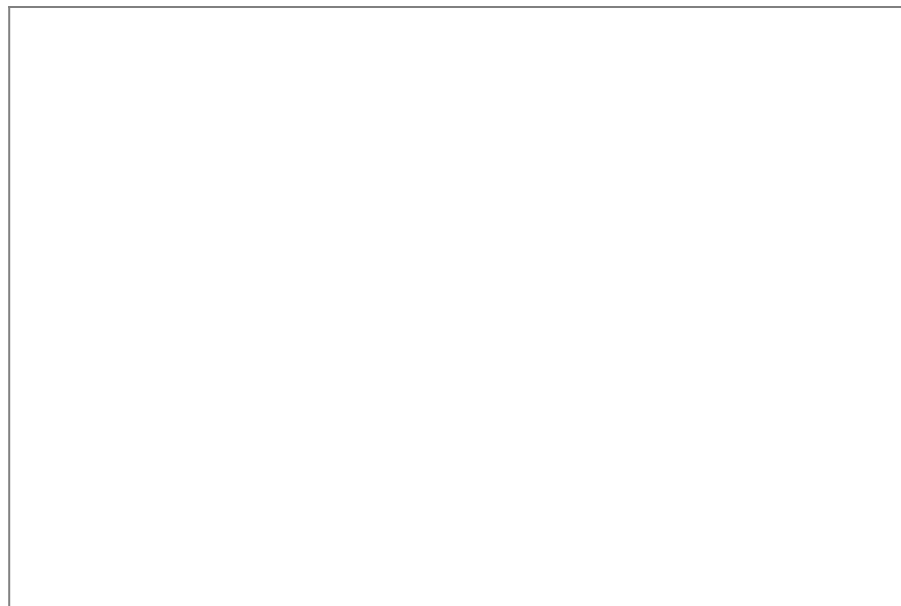


Hawthorn Road, Worcester



Total Area Approx
102.7 Sq M
1105.5 Sq Ft

For illustrative purposes only. Decorative finishes, fixtures & fittings do not represent the current state of the property. Measurements are approximate & not to scale. Floor Plans made using RoomSketcher.



For more information on this house or to arrange a viewing please call the office on:

01905 958 290

Alternatively, you can scan the QR to view all of the details of this property online.



arden
ESTATE AGENTS