






The logo for Arden Estate Agents, featuring a stylized green house icon above the word "arden" in a bold, white, sans-serif font. Below "arden" is the text "ESTATE AGENTS" in a smaller, white, sans-serif font.

arden  
ESTATE AGENTS

It's who  
you move  
with.

## 14 Althestan Close, Alvechurch, B48 7TF

Offers Over £325,000

 3  2  2

- NO CHAIN
- Breakfast Kitchen
- Delightful Lounge
- Dining Room with Sky Lantern
- Double Bedroom with En Suite
- Two Additional Bedrooms and Bathroom
- Low Maintenance Decked Rear Garden
- Side Driveway and Garage
- Well Located for Sought After Schooling and Village Amenities
- Built by Taylor Wimpey in 2013

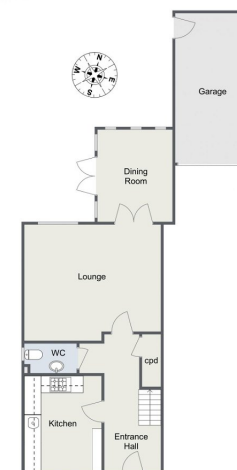


**NO CHAIN** A well proportioned family home built by Taylor Wimpey in 2013, designed to meet the needs of modern day living featuring a breakfast kitchen, lounge, dining room with sky lantern, bathroom and en-suite, decked rear garden and garage. The property is just half a mile from sought after schooling, village amenities and just over a mile from the train station.





Althestan Close, Alvechurch  
Ground Floor



Total Approximate Area (Including Garage): 1081 sq. m (1174.34 sq. ft)  
For illustrative purposes only. Decorative finishes, fixtures & fittings do not represent the current state of the property. Measurements are approximate & not to scale. Floor Plans made using RoomSketcher.

For more information on this house or to arrange a viewing please call the office on:

**0121 447 8300**

Alternatively, you can scan the QR to view all of the details of this property online.

