



Bushley Close, Woodrow, Redditch B98 7TU

Offers Over £160,000

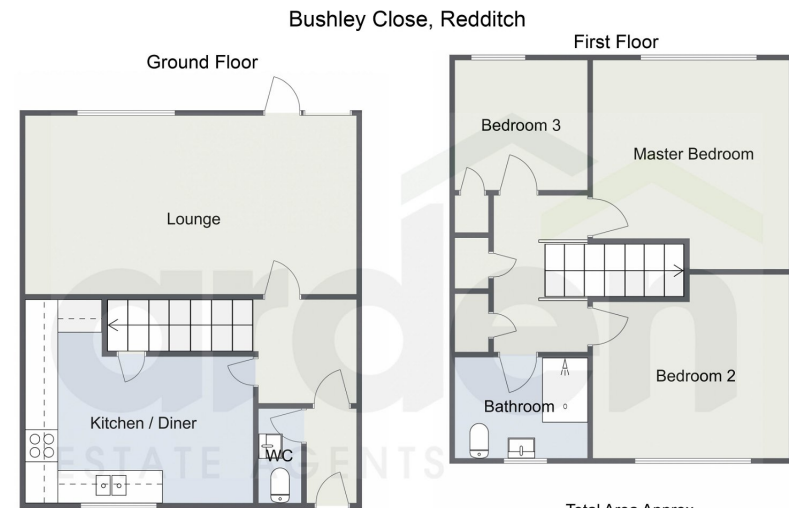
3 1 1

- Well Proportioned Mid-Terrace House
- Kitchen/ Diner
- Shower Room & Guest WC
- Garage En-Bloc
- Opportunity For Cosmetic Improvement
- Three Bedrooms
- Spacious Lounge
- Ample Built-in Storage
- Off Road Parking
- No Upward Chain



A well proportioned three bedroom terrace property, benefitting from having a single garage and ample off road parking. The property offers potential for some cosmetic improvement and is being sold with no upward chain.





Total Area Approx
88.7 Sq M
954.8 Sq Ft

For illustrative purposes only. Decorative finishes, fixtures & fittings do not represent the current state of the property. Measurements are approximate & not to scale. Floor Plans made using RoomSketcher.



Energy performance certificate (EPC)

Energy rating	C	Valid until: 18 March 2034
23 Bushley Close REDDITCH BB8 7TL		Certificate number: 2248-3621-1116-7448-1315
Property type	Mid-terrace house	
Total floor area	88 square metres	

Rules on letting this property

Properties can be let if they have an energy rating from A to E.

You can read [guidance for landlords on the regulations and exemptions](https://www.gov.uk/guidance/domestic-private-rented-property-minimum-energy-efficiency-standards-landlord-guidance) (<https://www.gov.uk/guidance/domestic-private-rented-property-minimum-energy-efficiency-standards-landlord-guidance>).

Energy rating and score

The graph shows this property's current and potential energy rating.

This property's energy rating is C. It has the potential to be B.

[See how to improve this property's energy efficiency.](#)

Current: C

Potential: B

For properties in England and Wales:
the average energy rating is D
the average energy score is 60

For more information on this house or to arrange a viewing please call the office on:
01527 540 654

Alternatively, you can scan the QR to view all of the details of this property online.

