




arden
ESTATE AGENTS

It's who
you move
with.

Longfellow Close, Walkwood, Redditch B97 5HW

£390,000

🛏️ 4 🍽️ 2 🛋️ 2

- Beautifully Appointed Detached House
- Spacious Lounge with Log Stove
- Large Conservatory
- Principal Bathroom, En-Suite to Master & Guest WC
- Driveway Parking and Garage
- Four Well-Proportioned Bedrooms
- Separate Dining Room
- Modern Dining Kitchen
- Landscaped Front and Rear Gardens
- Walking Distance to Vaynor First School and Walkwood Middle School

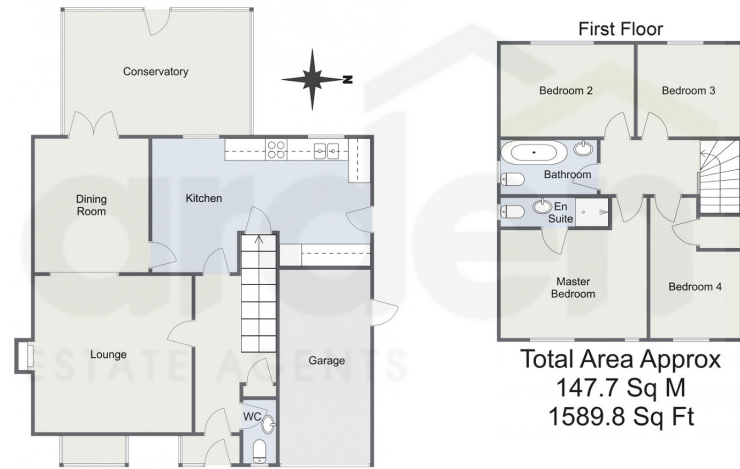


A beautifully appointed four bedroom detached house with driveway and integral garage, offering well-proportioned internal accommodation and a low maintenance rear garden, situated within walking distance to Vaynor First School and Walkwood Second school, in Walkwood.





Longfellow Close, Redditch
Ground Floor



Total Area Approx
147.7 Sq M
1589.8 Sq Ft

For illustrative purposes only. Decorative finishes, fixtures & fittings do not represent the current state of the property. Measurements are approximate & not to scale. Floor Plans made using RoomSketcher.



For more information on this house or to arrange a viewing please call the office on:

01527 540 654

Alternatively, you can scan the QR to view all of the details of this property online.



arden
ESTATE AGENTS