



Yeomans Close, Astwood Bank, Redditch B96 6ET

Offers In Region Of £495,000

🛏️ 4 🍽️ 2 🛋️ 2



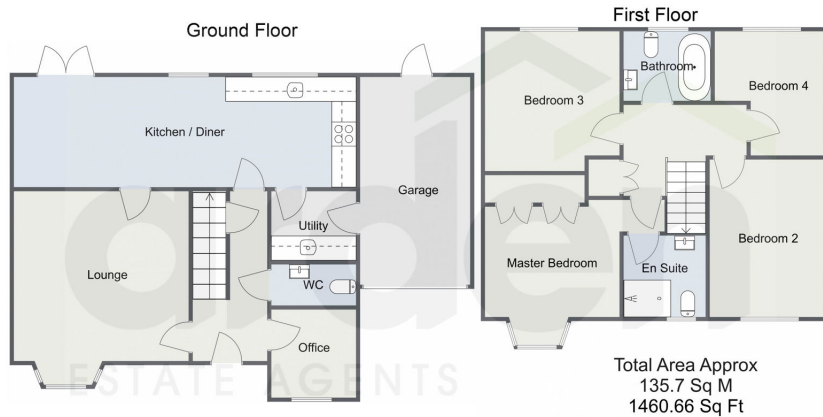
- Wonderfully Appointed Detached Home
- Lounge and Office/ Study
- Separate Utility
- Stylish Interiors
- Beautifully Maintained Rear Garden
- Four Well-Proportioned Bedrooms
- Open Plan Kitchen/ Diner
- Principal Bathroom, En-Suite to Master and Guest WC
- Driveway Parking and Garage
- Views to Neighbouring Countryside



A wonderfully appointed four-bedroom detached family home in Astwood Bank village, enjoying views of the neighboring countryside. The property offers stylish and well-proportioned accommodation, a beautifully maintained rear garden, driveway parking, and a garage.



Yeomans Close, Astwood Bank



Total Area Approx
135.7 Sq M
1460.66 Sq Ft

For illustrative purposes only. Decorative finishes, fixtures & fittings do not represent the current state of the property. Measurements are approximate & not to scale. Floor Plans made using RoomSketcher.

For more information on this house or to arrange a viewing please call the office on:

01527 540 654

Alternatively, you can scan the QR to view all of the details of this property online.

