



arden
ESTATE AGENTS

It's who
you move
with.

London Road, Worcester, WR5 2DY

Offers Over £725,000

5 2 3



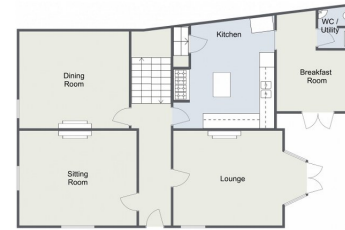
A stunning Grade II listed period home which has been lovingly looked after and improved by the current owners. Having a fresh and contemporary style throughout, yet still maintaining the character and charm of a period home. Reconditioned windows and secondary glazing makes this home deceptively quiet and worth viewing to appreciate this. The property comprises; sitting room, dining room, and lounge with double doors out onto the garden. Kitchen/breakfast room also has great views of the garden. Separate utility & Wc. Five impressive double bedrooms and two bathrooms. Gas central heating, a cellar, a beautiful walled and well stocked garden, and off-road parking. This home is in great condition and in such a convenient location to town, and the motorway. Viewing is recommended to appreciate what this home offers and it's being sold with no onward chain.



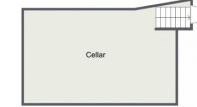


London Road, Worcester

Ground Floor



Lower Ground Floor



First Floor



Second Floor



Total Area Approx
247.0 Sq M
2688.7 Sq Ft

For illustrative purposes only. Decorative finishes, fixtures & fittings do not represent the current state of the property. Measurements are approximate & not to scale. Floor Plans made using RoomSketcher.



For more information on this house or to arrange a viewing please call the office on:

01905 958 290

Alternatively, you can scan the QR to view all of the details of this property online.

