



Holland Green, Worcester, WR4 0NG

£290,000

3 2 1



This well presented three-bedroom end of terrace, located in the highly sought-after Warndon Villages, has been updated. With its modern finishes and thoughtful design, this move-in ready home is perfect for first-time buyers or those looking to downsize.

As you step into the property, you're greeted by a practical porch, complete with a handy storage cupboard. The lounge, located at the front of the house, is warmly presented in neutral tones, creating a bright and inviting atmosphere. At the rear, the kitchen stands out with its modern design, featuring sleek gloss cabinets and matching worktops. French doors open directly onto the garden, making it easy to extend your dining and entertaining outdoors on warmer days. The kitchen is equipped with built-in appliances, including a fridge-freezer, an electric oven and grill positioned at an ideal height, an electric hob, and a modern extractor fan.

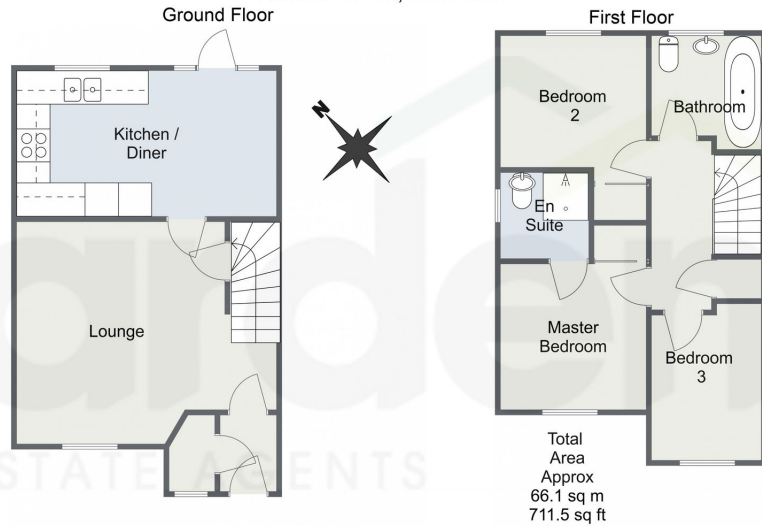
Upstairs, the home boasts three bedrooms and two modern bathrooms, providing the perfect setup for family life or when hosting guests. Both bathrooms are finished in a soothing, neutral palette. The ensuite, connected to the master bedroom, offers a shower with a waterfall head, a sleek sink, toilet, and a heated towel rail. The family bathroom features a bath, a sink, and a toilet. For added convenience, both the master bedroom and the second bedroom are equipped with built-in wardrobes, maximizing storage space.

The garden is a true highlight, offering a peaceful retreat with mature borders and a spacious deck, perfect for enjoying sunny afternoons or outdoor dining. In addition, the property comes with two allocated parking spaces, which are easily accessed via a side gate from the garden, ensuring both convenience and practicality.

Location: Holland Green is situated within the coveted Warndon Villages area of Worcester. There is convenient access to local amenities, including shops, Lyppard Grange Primary School and Lyppard Grange Medical Centre. The neighbourhood has access to Warndon Wood Nature Reserve and, slightly further afield, Aconbury Orchard. The area is well-connected by regular bus services and Worcester Shrub Hill Train Station is ten minutes away, making it easy to reach Worcester city centre and beyond. With excellent

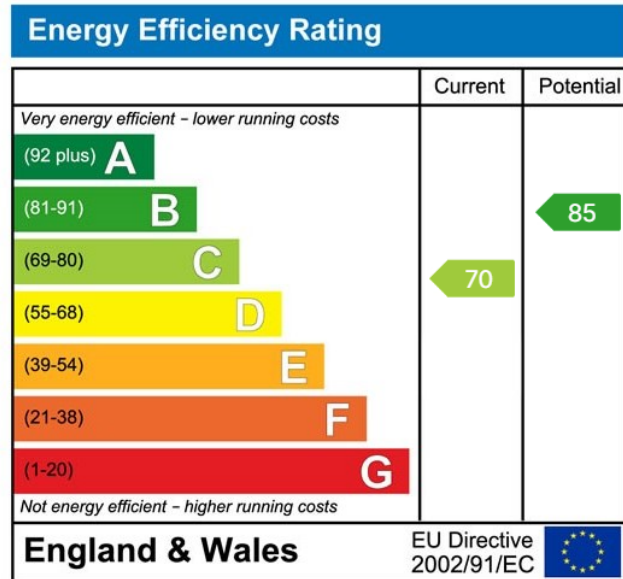


Holland Green, Worcester



For illustrative purposes only. Decorative finishes, fixtures & fittings do not represent the current state of the property. Measurements are approximate & not to scale. Floor Plans made using RoomSketcher.

- High Specification
- Two Parking Spaces
- Move In Ready
- Warndon Villages
- Landscaped Garden
- Two Bathrooms



For more information on this house or to arrange a viewing please call the office on:

01905 958 290

Alternatively, you can scan the QR to view all of the details of this property online.

