



Horton Grove, Shirley, Solihull, B90 4UZ

Offers In Region Of £600,000

🛏️ 4 🚿 2 🚺 2



- Four Bedrooms
- Recently Refurbished Kitchen
- Driveway
- Garage
- En-Suite To Master Bedroom
- Ground Floor W.C. & Utility
- First Floor Family Bathroom
- Close To Local Amenities





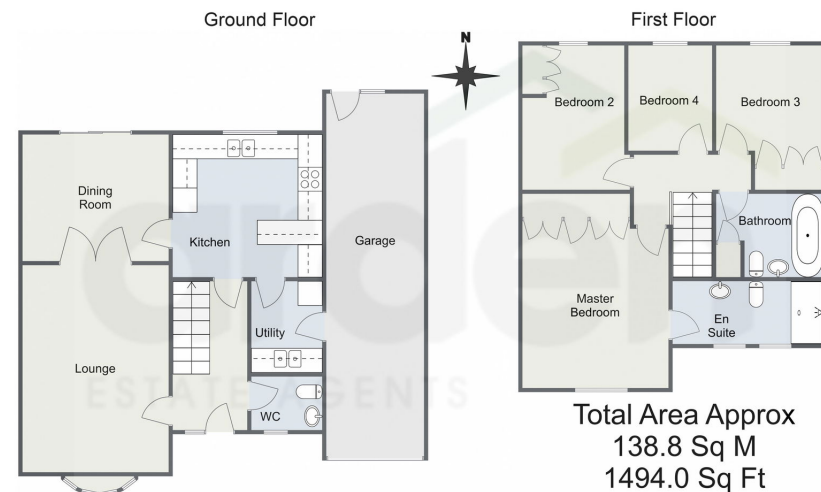
Nestled in a quiet cul-de-sac, this well-maintained four-bedroom detached property offers both tranquillity and convenience, with off-road parking and easy access to local amenities. As you approach, you're greeted by a spacious driveway and garage, providing ample parking.

For more information on this house or to arrange a viewing please call the office on:
0121 745 5888

Alternatively, you can scan the QR to view all of the details of this property online.



Horton Grove, Solihull



For illustrative purposes only. Decorative finishes, fixtures & fittings do not represent the current state of the property. Measurements are approximate & not to scale. Floor plans made using RoomSketcher.

08/09/2024, 15:28

Energy performance certificate (EPC) - Find an energy certificate - GOV.UK

Energy performance certificate (EPC)		
21 Horton Grove SOLIHULL B37 4JZ	Energy rating C	Valid until 2 July 2034
		Certificate number 2634-1623-6198-0287-4226
Property type	Detached house	
Total floor area	124 square metres	

Rules on letting this property

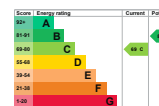
Properties can be let if they have an energy rating from A to E.

You can read [guidance for landlords on the regulations and exemptions](https://www.gov.uk/guidance/landlords-on-the-requirements-and-exemptions).
<https://www.gov.uk/guidance/landlords-on-the-requirements-and-exemptions#energy-efficiency-standards-landlord-guidance>.

Energy rating and score

This property's energy rating is C. It has the potential to be B.

[See how to improve this property's energy efficiency.](#)



The graph shows this property's current and potential energy rating.

Properties get a rating from A (best) to G (worst) and a score. The better the rating and score, the lower your energy bills are likely to be.

For properties in England and Wales:
the average energy rating is D
the average energy score is 60

https://find-energy-certificates.service.gov.uk/energy-certificate/2024-1623-6198-0287-4226?print=true

1/4