



The logo for Arden Estate Agents, featuring the word 'arden' in a bold, white, sans-serif font with a green house icon above the 'n'. Below it, the words 'ESTATE AGENTS' are written in a smaller, white, sans-serif font.

arden
ESTATE AGENTS

It's who
you move
with.

Foxglove Road, Worcester, WR5 3HG

£300,000

3 1 0



Discover this well presented three-bedroom home located in the sought-after area of St Peters, featuring a garage and a gorgeous fireplace. Nestled in a convenient and tranquil position, this home offers easy access to local amenities and boasts views over Worcester. Don't miss the opportunity to make this delightful property your new home.

Upon entering through the front door, you are greeted by an inviting entrance hall that leads to the lounge with a bay window to the front, providing natural light and a welcoming atmosphere. The ground floor also includes an neutral shaker style kitchen, equipped with base and eye-level units, with room for an oven, dishwasher and washing machine. The separate dining room is a bright area, enhanced by double doors to the rear garden, featuring tiled flooring.

The first floor houses three bedrooms, with the master bedroom benefiting from built-in wardrobes, providing ample storage. A modern family bathroom and a separate storage cupboard offer additional convenience. The bathroom has been renovated to a high standard and features a walk-in shower, toilet and sink.

Outside, the landscaped garden features a patio area perfect for al-fresco dining and the rest is laid to lawn, with a range of mature plants and trees providing a sense of privacy and tranquillity. The property also includes a garage, accessible from the garden and the front of the property, ensuring additional storage.

Location: St Peters offers convenient access to a variety of amenities, including a Tesco superstore, a petrol station, and a small shopping area with a Chinese takeaway, a chip shop, a dentist, a beauty salon, a chemist, a dry cleaner, a charity shop, and a part-time GP surgery near the village hall. Additionally, the area boasts excellent motorway links to M5 Junction 7 and several bus routes into the town centre, ensuring easy connectivity.

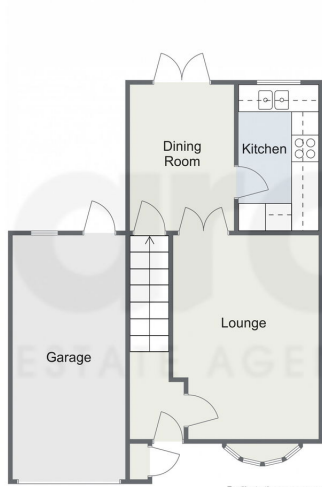
Rooms:

Garage - 5.41m x 2.5m (17'8" x 8'2")

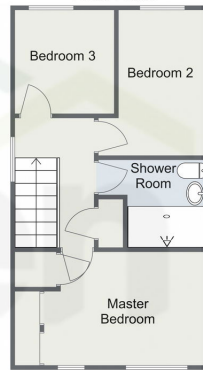
Lounge - 4.5m x 3.22m (14'9" x 10'6") max



Foxglove Road, Worcester
Ground Floor



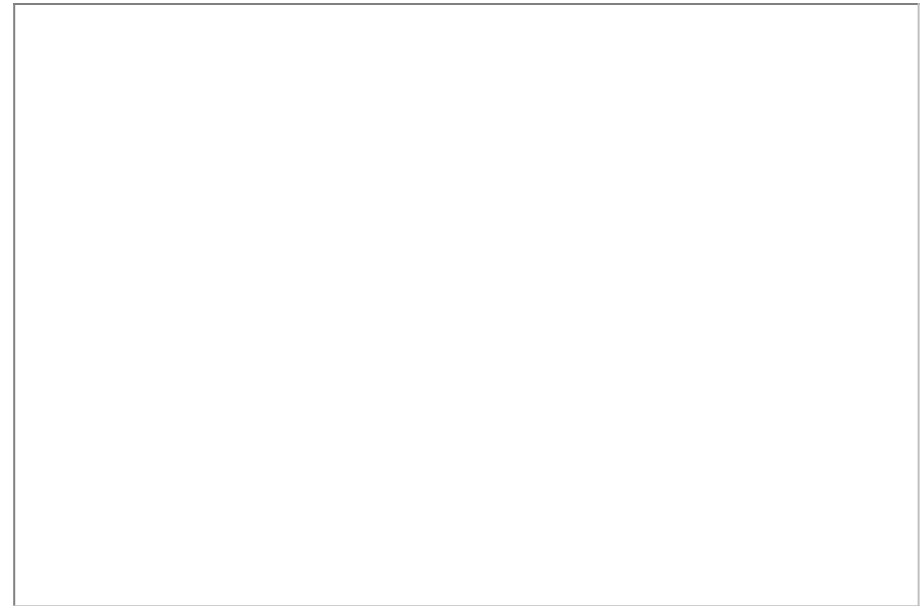
First Floor



Total Area Approx
80.6 Sq M
867.6 Sq Ft

For illustrative purposes only. Decorative finishes, fixtures & fittings do not represent the current state of the property. Measurements are approximate & not to scale. Floor Plans made using RoomSketcher.

- Gorgeous Feature Fireplace
- Modern Shower Room
- Separate Dining Room
- Popular St Peters Location
- Mature Garden
- Garage Accessible To Rear



For more information on this house or to arrange a viewing please call the office on:
01905 958 290

Alternatively, you can scan the QR to view all of the details of this property online.

