



Diglis Dock Road, Worcester, WR5 3DD

Offers Over £180,000

🛏️ 2 🚿 2 🚻 1



Arden Estate Agents are pleased to present this two-bedroom apartment located in the popular Diglis area. This second-floor property seamlessly blends modern living with scenic living, offering a comfortable and convenient lifestyle.

The apartment boasts an open plan living area that integrates a kitchen and a sitting room with a Juliet balcony, creating a bright and welcoming space for relaxation and entertainment. There are two double bedrooms, with the master bedroom featuring an ensuite bathroom. Additionally, the property includes a family bathroom and ample storage space to meet your needs.

Key features of this apartment include an allocated parking space, efficient gas central heating, and double-glazed windows, ensuring comfort throughout the year. The property is offered for sale with no onward chain, making it an attractive option for prospective buyers.

Situated in the desirable Diglis area, residents can enjoy local amenities such as a public house, gym, and café. The apartment is within walking distance of Worcester City Centre, providing easy access to a variety of shops, restaurants, and cultural attractions, enhancing the appeal of this delightful property.

Agent's Note: We have been made aware the property is Leasehold. The Service Charge is approx. £1830 per year and Ground Rent is £260 per year. There is approximately 107 years remaining on the lease but this information would need to be clarified by your solicitor. The apartment is currently rented out for £890 pcm.

Rooms:

Lounge Diner - 5.6m x 3.93m (18'4" x 12'10") max

Kitchen - 3.06m x 1.93m (10'0" x 6'3")

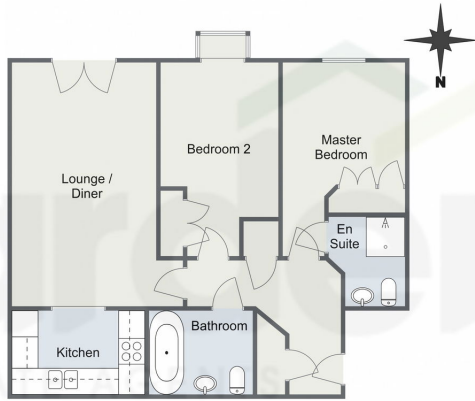
Master Bedroom - 4.47m x 2.81m (14'7" x 9'2") max

Ensuite - 2.13m x 1.74m (6'11" x 5'8") max

Bedroom 2 - 4.5m x 2.71m (14'9" x 8'10") max



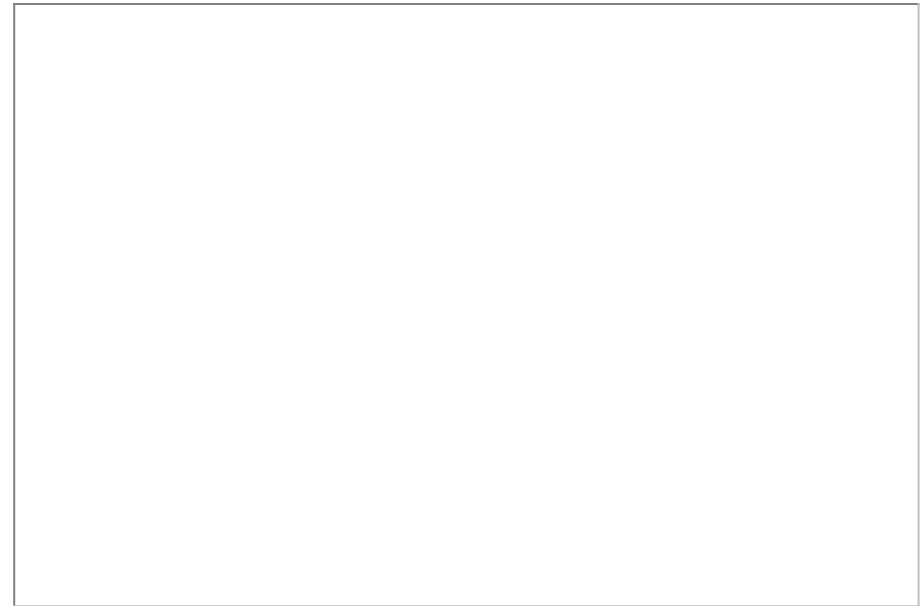
Medina House, Diglis Dock Road, Worcester



Total Area Approx
66.6 Sq M
716.9 Sq Ft

For illustrative purposes only. Decorative finishes, fixtures & fittings do not represent the current state of the property. Measurements are approximate & not to scale. Floor Plans made using RoomSketcher.

- Popular Diglis
- Chain Free
- Secure Allocated Parking
- Two Bathrooms
- Close to City Centre
- Marina Location



For more information on this house or to arrange a viewing please call the office on:

01905 958 290

Alternatively, you can scan the QR to view all of the details of this property online.

