



Bevere House, Bevere Green, Worcester, WR3 7RG

Offers Over £325,000

🛏️ 2 🪑 2 🚿 1



Discover the allure of this remarkably spacious two bedroom ground floor apartment nestled within a historic Grade II Listed building. Boasting flexible and ample living space, it includes a private garden extending to the rear and side—a serene retreat just for you. This flat seamlessly blends period elegance with modern comfort, presenting an exclusive chance to own a prestigious property in a coveted location. With its exquisite features, secluded garden oasis, and access to communal amenities, this home epitomizes the pinnacle of sophisticated living in Worcester.

Description: Step into sophistication and charm with this exceptional two-bedroom flat nestled in a sought-after location. Welcoming you with a picturesque stone mullion covered porch, the entrance leads into a communal vestibule and hallway, setting a tone of timeless elegance. From here, a door opens into the flat's initial entrance hall, leading to a good-sized inner hallway.

The sitting room is a true sanctuary, adorned with a stunning full-length feature sash window adorned with shutters that frame views of the meticulously maintained garden. Character abounds with a feature marble fireplace, deep cornicing, and high decorative skirting boards, creating a refined ambiance ideal for both relaxation and entertaining.

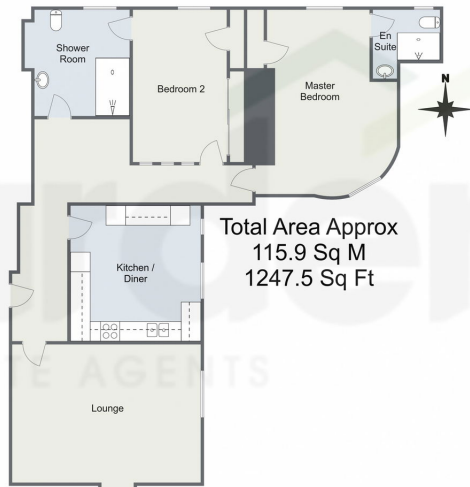
The kitchen and breakfast area exude modern convenience while maintaining the property's period charm. Neutrally toned shaker-style units, complemented by tiled splashbacks and sleek rolled edge work surfaces, enhance the space. Equipped with a range cooker, extractor hood, and ample space for appliances, this kitchen is a chef's delight. Natural light floods the room through a sash window, offering a pleasant view of the garden.

Indulge in luxury within the main bathroom, upgraded to an exceptional standard with a large walk-in shower, elegant sink, w/c, and thoughtfully integrated shelving. A sash window adds to the bathroom's bright and airy atmosphere, ensuring a spa-like experience at home.

Both bedrooms are generously proportioned retreats. The second bedroom features tranquil garden views, built-in wardrobes, and



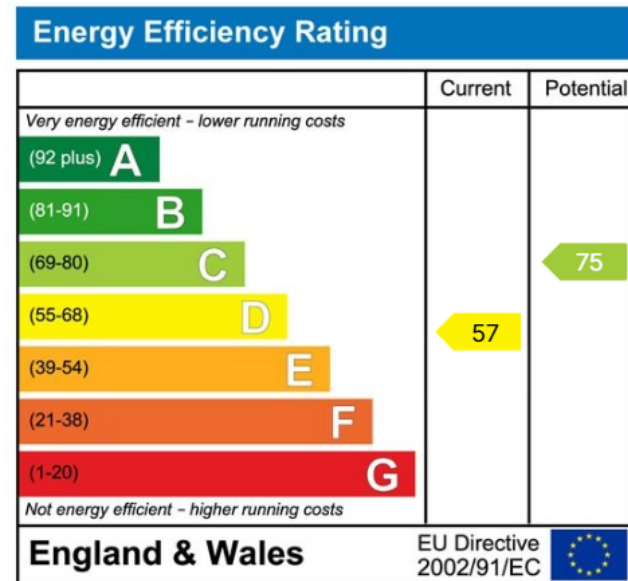
Bever House, Bever, Worcester
Ground Floor



Total Area Approx
115.9 Sq M
1247.5 Sq Ft

For illustrative purposes only. Decorative finishes, fixtures & fittings do not represent the current state of the property. Measurements are approximate & not to scale. Floor Plans made using RoomSketcher.

- Ground Floor
- Own Private Rear Garden
- Situated in Gorgeous Grade II Building
- Ugraded Throughout
- Oak Internal Doors
- Exceptionally Presented



For more information on this house or to arrange a viewing please call the office on:

01905 958 290

Alternatively, you can scan the QR to view all of the details of this property online.

