



Meadow Road, Worcester, WR3 7PP

Offers Over £425,000

🛏️ 3 🚿 2 🚗 2



This stunning family home on Meadow Road combines modern living with views of the Malvern Hills. Highlights include a sleek open-plan kitchen diner, bright lounge, master bedroom with en-suite and dressing room, and a versatile conservatory leading to a private garden. With parking for four cars, a double garage, and great space inside and out, it's perfect for family living and entertaining.

Nestled on Meadow Road in Worcester, this spacious family home offers a blend of modern convenience and comfort. As you enter the ground floor, you're welcome by a hallway with access to the lounge, w/c and kitchen diner, as well as handy storage cupboard. The kitchen diner is the heart of the home, featuring sleek countertops, integrated appliances, and ample storage with crisp cabinetry. The open-plan layout extends seamlessly into the dining area, creating an inviting space perfect for entertaining or family meals. Situated under the stairs is a convenient WC, thoughtfully placed for guest use.

The lounge is bathed in natural light, thanks to the large windows and the adjoining conservatory. The conservatory adds a versatile extra living area with access to the garden, perfect for enjoying warm days or relaxing with a book.

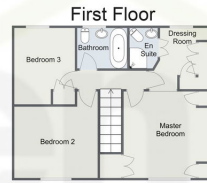
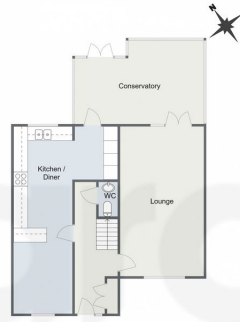
Upstairs, the first floor boasts three well-proportioned bedrooms. The master bedroom comes with its own en-suite bathroom and a dressing room, offering a luxurious retreat. The second and third bedrooms have easy access to a family bathroom. Each room has been designed to maximize both comfort and privacy.

Outside, the driveway to the front of the property offers parking for 3/4 vehicles along with a convenient double garage, providing great storage. The rear private garden is well maintained and offers a large patio space for relaxing or hosting. The lawn provides a useful space for children to play. The property is set against a beautiful outlook, surrounding green space, offering a picturesque view of the Malvern Hills to complete this home.

Location: Located in the heart of the popular Claines area, this property enjoys a prime position, surrounded by the sought-after neighbourhoods of Northwick and Bever. The location is ideal for



Meadow Road, Worcester
Ground Floor

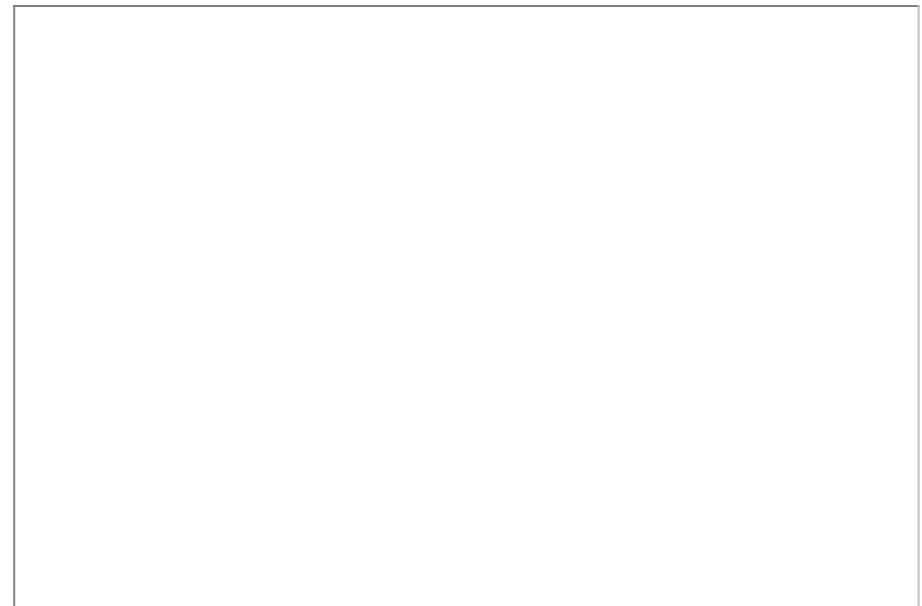


Total Area Approx
154.0 Sq M
1657.7 Sq Ft



For illustrative purposes only. Decorative finishes, fixtures & fittings do not represent the current state of the property. Measurements are approximate & not to scale. Floor Plans made using RoomSketcher.

- Rural Outlook
- Kitchen Diner
- Popular Claines Location
- Detached Double Garage
- Large Conservatory
- Downstairs Toilet



For more information on this house or to arrange a viewing please call the office on:

01905 958 290

Alternatively, you can scan the QR to view all of the details of this property online.

