



# Otter Close, Winyates Green, Redditch B98 0SJ

£375,000

🛏️ 4 🚿 2 🛋️ 1

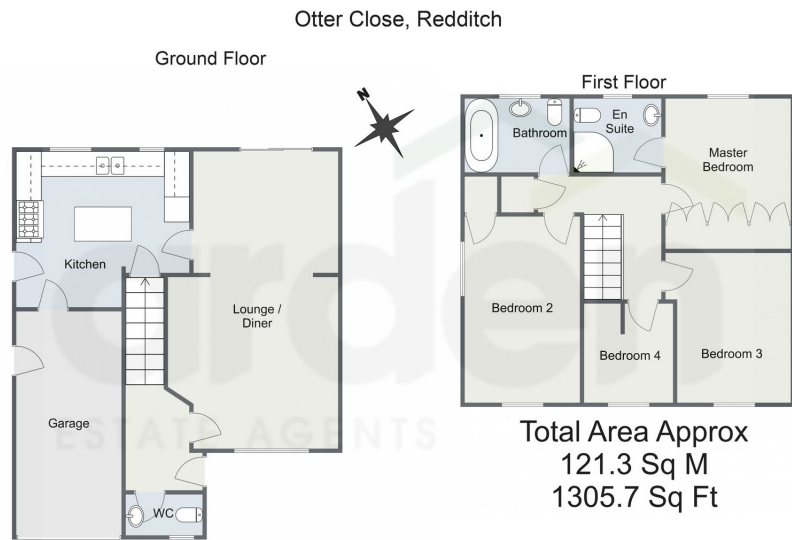


- Wonderfully Maintained Detached House
- Open Plan Lounge and Dining Room
- Bathroom, En-Suite Shower Room & Guest WC
- Integral Garage
- NO Onward Chain
- Four Bedrooms
- Well Appointed Kitchen Room
- Low Maintenance Landscaped Garden
- Ample Driveway Parking



This wonderfully maintained and well-presented four-bedroom detached home is being sold with no upward chain and is located in Winyates Green. The property boasts well-proportioned living areas, a beautifully cared-for rear garden, an integral garage, and ample driveway parking.

No Onward Chain



For illustrative purposes only. Decorative finishes, fixtures & fittings do not represent the current state of the property. Measurements are approximate & not to scale. Floor Plans made using RoomSketcher.

Energy performance certificate (EPC)		
63 Otter Close REDDITCH B98 0GJ	Energy rating <b>C</b>	Valid until: 6 August 2034
		Certificate number: 2130-9288-1149-9003-3291
Property type	Detached house	
Total floor area	106 square metres	
<b>Rules on letting this property</b>		
Properties can be let if they have an energy rating from A to E.		
You can read <a href="https://www.gov.uk/guidance/domestic-private-rented-property-minimum-energy-efficiency-standard-landlord-guidance">guidance for landlords on the regulations and exemptions</a> ( <a href="https://www.gov.uk/guidance/domestic-private-rented-property-minimum-energy-efficiency-standard-landlord-guidance">https://www.gov.uk/guidance/domestic-private-rented-property-minimum-energy-efficiency-standard-landlord-guidance</a> ).		
<b>Energy rating and score</b>		
This property's energy rating is C. It has the potential to be B.		
<a href="#">See how to improve this property's energy efficiency.</a>		
		<p>The graph shows this property's current and potential energy rating.</p> <p><b>Properties get a rating from A (best) to G (worst) and a score.</b> The better the rating and score, the lower your energy bills are likely to be.</p> <p>For properties in England and Wales: the average energy rating is D the average energy score is 60</p>

For more information on this house or to arrange a viewing please call the office on:

**01527 540 654**

Alternatively, you can scan the QR to view all of the details of this property online.

