



Church Road, Worcester, WR3 8NX

Offers Over £215,000

🛏️ 2 🚿 1 🚗 2



Summary: Discover this charming Edwardian mid-terrace nestled on Church Road—a delightful home tailor made for first-time buyers or those seeking a cozy space to downsize. Imbued with timeless elegance, Church Road has been meticulously updated, ensuring a seamless transition for its new owners, and best of all, it's ready to move into with no chain attached! Don't miss the opportunity to make this your new home sweet home. Contact Arden Estate Agents today to schedule a viewing and make this delightful property your new home.

Description: This property has been thoroughly updated leaving no work for you to do! The renovations have included a new boiler, full electrical rewire as well as cosmetic works throughout.

As you step through the front door, you're immediately greeted by the feature fireplace, offering a warm welcome and the first hint of the homely renovations that define this property. The lounge exudes charm with its gorgeous bay window, flooding the space with natural light and enhancing its inviting atmosphere.

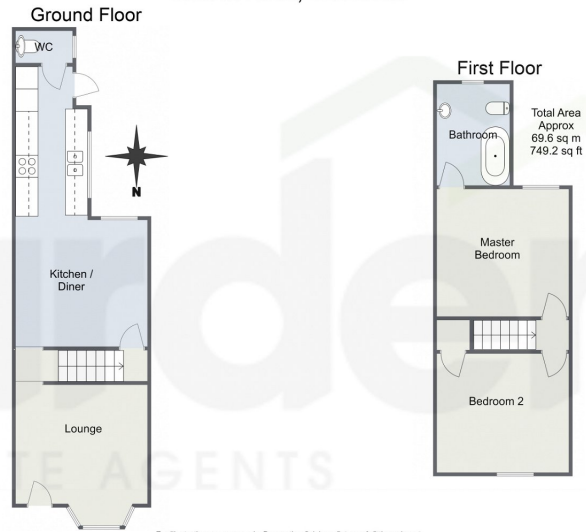
The staircase, positioned centrally within the home, boasts a stylish new stair runner that seamlessly continues the renovation's modern theme. At the rear of the property, the kitchen diner has been beautifully refitted with elegant units and a complementary worktop. It comes equipped with an integrated oven and fridge freezer, and the vendor has thoughtfully included a washing machine. From the kitchen, you have access to the garden, perfect for outdoor relaxation and entertaining. Additionally, there is a convenient w/c, adding to the functional layout of this delightful home.

On the first floor, you'll find two well-appointed bedrooms. The second bedroom, located at the front aspect, features a convenient built-in wardrobe, maximizing storage space. The master bedroom, situated at the rear of the property, offers direct access to the beautifully renovated bathroom. The bathroom is adorned in elegant muted green tones and includes a w/c, a sink, and a bath with a luxurious waterfall shower overhead.

The rear garden is a great space, featuring a patio area ideal for summer dining and relaxation. A flower bed caters to keen

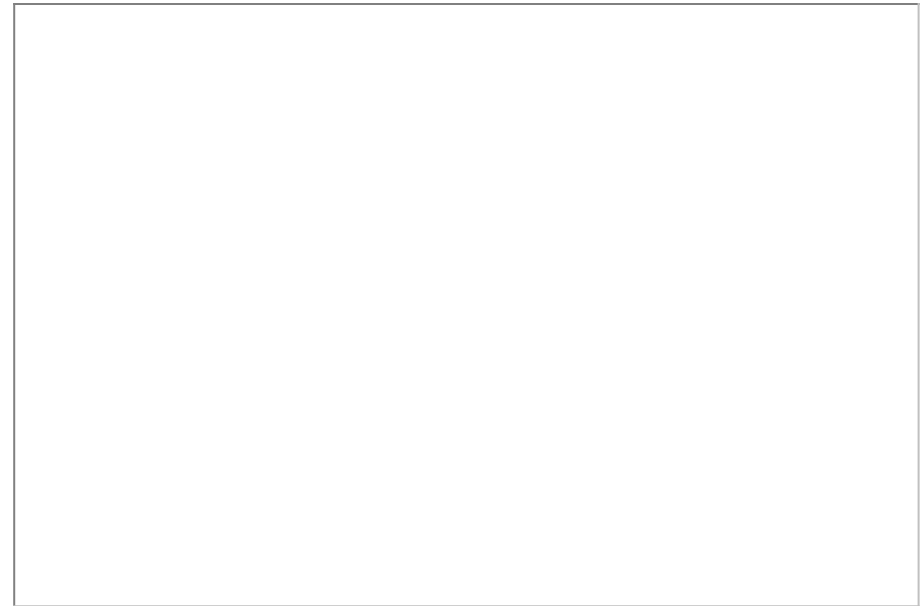


Church Road, Worcester



For illustrative purposes only. Decorative finishes, fixtures & fittings do not represent the current state of the property. Measurements are approximate & not to scale. Floor Plans made using RoomSketcher.

- Fully Renovated Victorian
- Re wired & New Boiler
- Kitchen Dining Room
- Lounge
- Two Double Bedrooms
- Bathroom & Wc



For more information on this house or to arrange a viewing please call the office on:

01905 958 290

Alternatively, you can scan the QR to view all of the details of this property online.

