

Birchfield Road, Webheath, Redditch B97 4LR

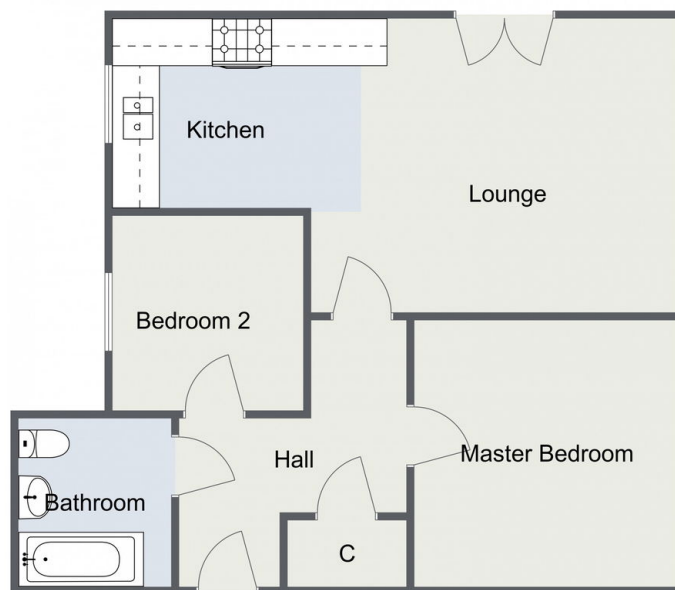
Offers Over £140,000

🛏 2 🚿 1 🚻 1



- First Floor
- Bathroom
- Allocated Parking
- Popular Location
-
- Two Bedrooms
- Open Plan Kitchen/Dining/Living Space
- Neatly Maintained Communal Grounds
-
-

Birchfield Road, Redditch
Apartment



Total Area Approx:
55 sq metres (592 sq ft)

For illustrative purposes only. Decorative finishes, fixtures & fittings do not represent the current state of the property. Measurements are approximate & not to scale. Floor Plans made using RoomSketcher.

****Allocated Parking**** A beautifully presented two bedroom, first floor apartment offered with open plan kitchen/dining/living space with Juliette style balcony, bathroom, allocated parking and situated in the popular location of Webheath, Redditch.