

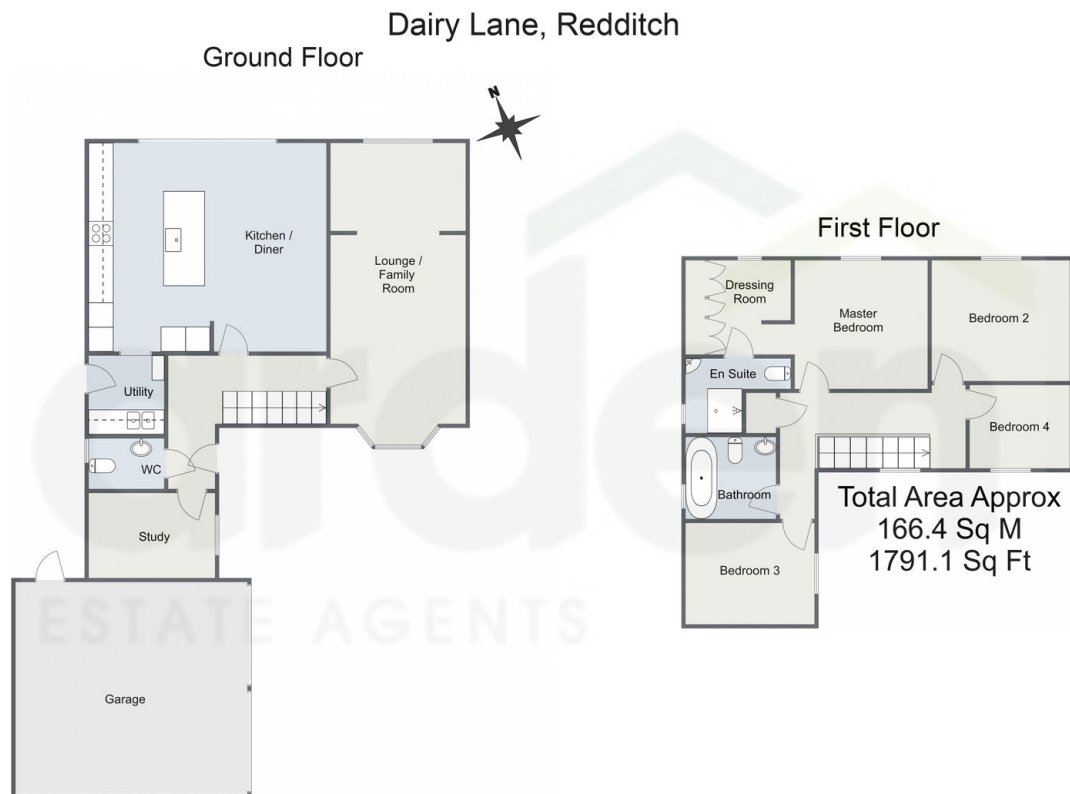
Dairy Lane, Brockhill, Redditch B97 6TR

£465,000

🛏️ 4 🚿 2 🚺 2



- Study Room
- Bathroom, En-Suite to Master and Guest WC
- Four Well-Proportioned Bedrooms
- EPC - C
- Enclosed Rear Garden
- Lounge/ Family Room
- Master Bedroom with Dressing Room
- Well Appointed Detached Home
- Driveway with EV Charger and Double Garage
- Open Plan Kitchen/ Diner and Separate Utility



For illustrative purposes only. Decorative finishes, fixtures & fittings do not represent the current state of the property. Measurements are approximate & not to scale. Floor Plans made using RoomSketcher.

A wonderfully appointed four bedroom detached family home, situated in the popular residential location of Brockhill. The property offers well-proportioned accommodation with stylish interiors, enclosed rear garden, driveway and adjoining double garage.