

**Merewood, Malthouse Lane, Earlswood, Solihull, B94 5SD**

£1,650,000

🛏 5 🚿 5 🚗 2



This exquisite 5-bedroom new build by Hagley Homes, situated in the heart of Earlswood, offers luxury and tranquillity in equal measure. Nestled down a private gated driveway that serves only three houses, the property sits on a c. 1/2 acre plot with stunning views, providing a perfect blend of exclusivity and natural beauty.

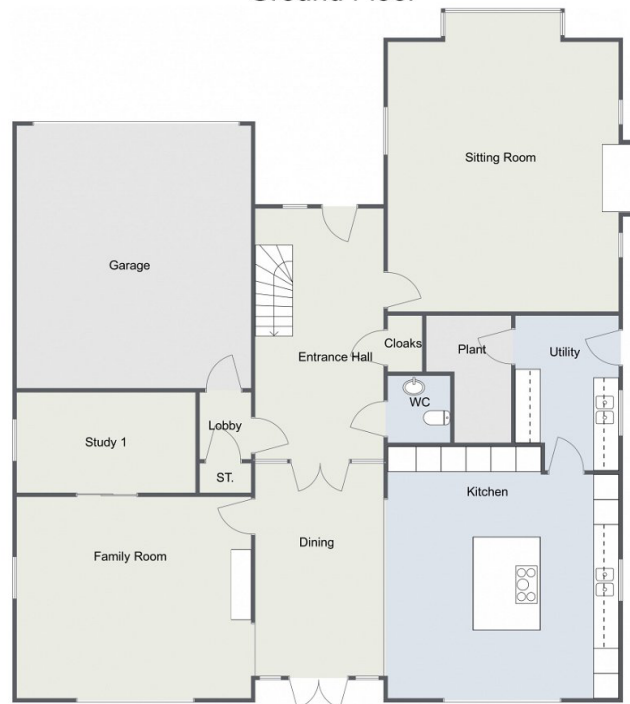


## Key Features

- Five Double Bedrooms
- 3 x En Suites and Downstairs WC
- South Facing Garden With Countryside Views
- Circa 0.5 Acre Plot
- High Specification Throughout Featuring Crittal Style Doors Downstairs
- Large Open Plan Kitchen/Diner/Family Room Plus Utility Room
- Driveway And Double Garage With Electric Car Charging Point
- Triple Glazing Plus Solar Panels
- Circa 4,200 Sq Ft
- Within Close Proximity To Earlswood Lakes Train Station

## Malthouse Lane, Earlswood

### Ground Floor



For illustrative purposes only. Decorative finishes, fixtures & fittings do not represent the current state of the property. Measurements are approximate & not to scale. Floor Plans made using RoomSketcher.