

Warwick Close, Studley, B80 7RE

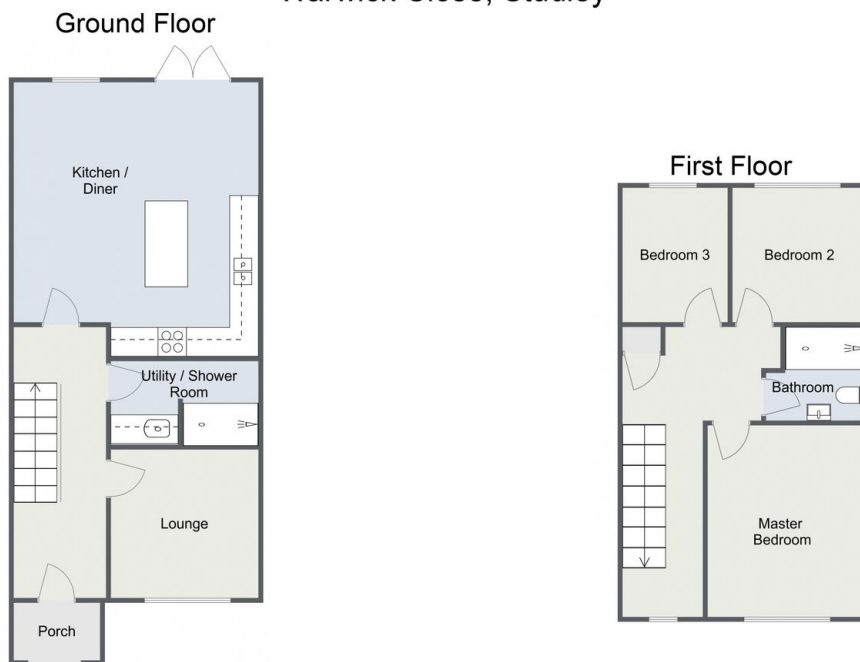
£340,000

3 1 1



- Executive New Build
- High Specification
- Shower Room and Family Bathroom
- Located in the Popular Village of Studley
- 10 Year Warranty
- Three Bedrooms
- No Onward Chain
- Off Road Parking

Warwick Close, Studley



Total Area Approx
102.7 Sq M
1.152.90 St Ft

For illustrative purposes only. Decorative finishes, fixtures & fittings do not represent the current state of the property. Measurements are approximate & not to scale. Floor Plans made using RoomSketcher.

An executive new build three bedroom semi-detached home, finished to an exceptionally high standard and offered with a spacious and well appointed family/kitchen/diner with a separate utility, lounge, shower room and family bathroom, off road parking, landscaped rear garden and situated in the popular village of Studley. ****Offered with no onward chain and 10 year warranty****