



# Apt 6, Vinegar House, Worcester, WR1 1DJ

Guide Price £325,000

🛏️ 2 🪑 2 🚿 1



This unique and striking development is in the heart of the city surrounded by fantastic bars and restaurants, and on the same road as Worcester Foregate Street Station. Arden Estates are delighted to bring phase two. Vinegar House are stunning Grade II listed, exclusive and sophisticated apartments. We have an eclectic mix of one- and two-bedroom duplex apartments, some with private terraces and feature beams, coming soon. All apartments have been designed and finished to a very high specification and design. Each apartment will have access to a bike store. Parking is available on selected plots. Please contact our Worcester office for further information, or to request a brochure.

### Apartment 6

This Grade II duplex apartment is entered via a communal staircase which leads you to your front door. Enter into lobby with access to the hallway and storage cupboard. Additional hallway which could be used as a study or seating area. The main bedroom has the benefit of built in wardrobes, en-suite and Juliet balcony. Additional second bedroom and bathroom with separate bath and shower. To the first floor is an open plan living/kitchen/dining area. The kitchen area offers base and eye level units with built in appliances. Access onto your own private roof terrace. The property benefits from feature beams and electric heating.

There is one allocated leased parking space with this plot. See specification for further detail.

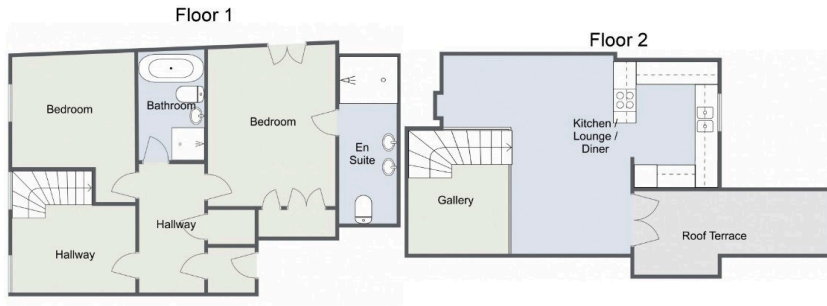
**Coming soon** - Vinegar Works is a co-working space that will create an atmosphere of innovation and creativity. Where residents can interact and work alongside each other, creating opportunities in a more relaxed working environment. All residents of Vinegar House will receive exclusive rates and opportunities when this exciting and new workspace opens.

Please see individual floor plans for each apartments layout. Please note the CGI's are for selected plots and are illustration only.

### Specification

Stylish Scandi design throughout

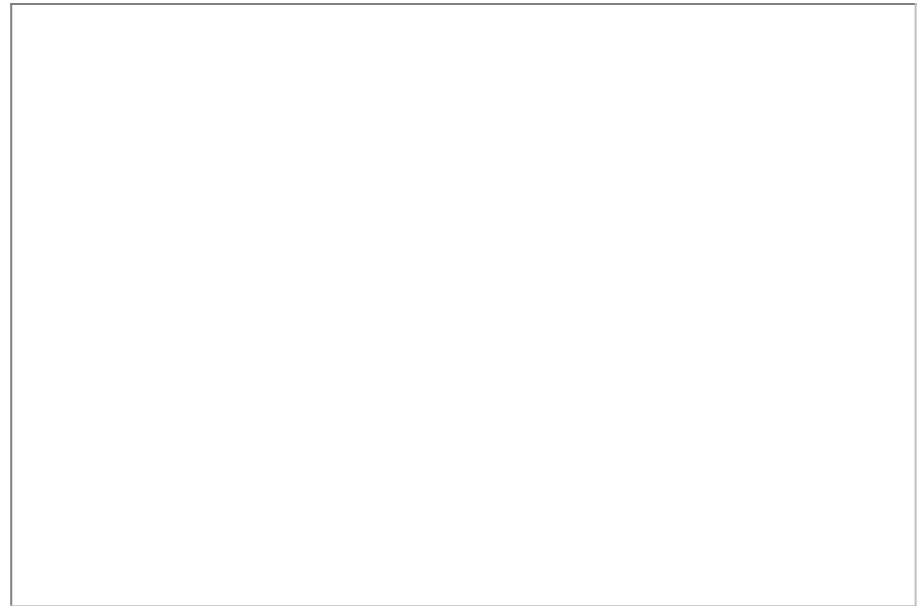




Approx. 87.21 m<sup>2</sup>

For illustrative purposes only. Decorative finishes, fixtures & fittings do not represent the current state of the property. Measurements are approximate & not to scale. Floor Plans made using RoomSketcher.

- Few Plots Remaining in Phase Two
- High Specification & Creative 'Scandi Style' Design
- Full Fibre Giga Speed Connectivity
- A Years Free Membership to Vinegar Works - Coming Soon
- Grade II Listed Duplex Apartments
- Digital Automation Controlling Lighting, Heating and Kitchen Appliances
- 999 Year Lease & Service Charges Between £950 - £1450 Depending on Plot
- City Centre Location, Close to all Amenities and Transport Links



For more information on this house or to arrange a viewing please call the office on:

**01905 958 290**

Alternatively, you can scan the QR to view all of the details of this property online.

